

# RIVER CLYDE DEVELOPMENT CORRIDOR

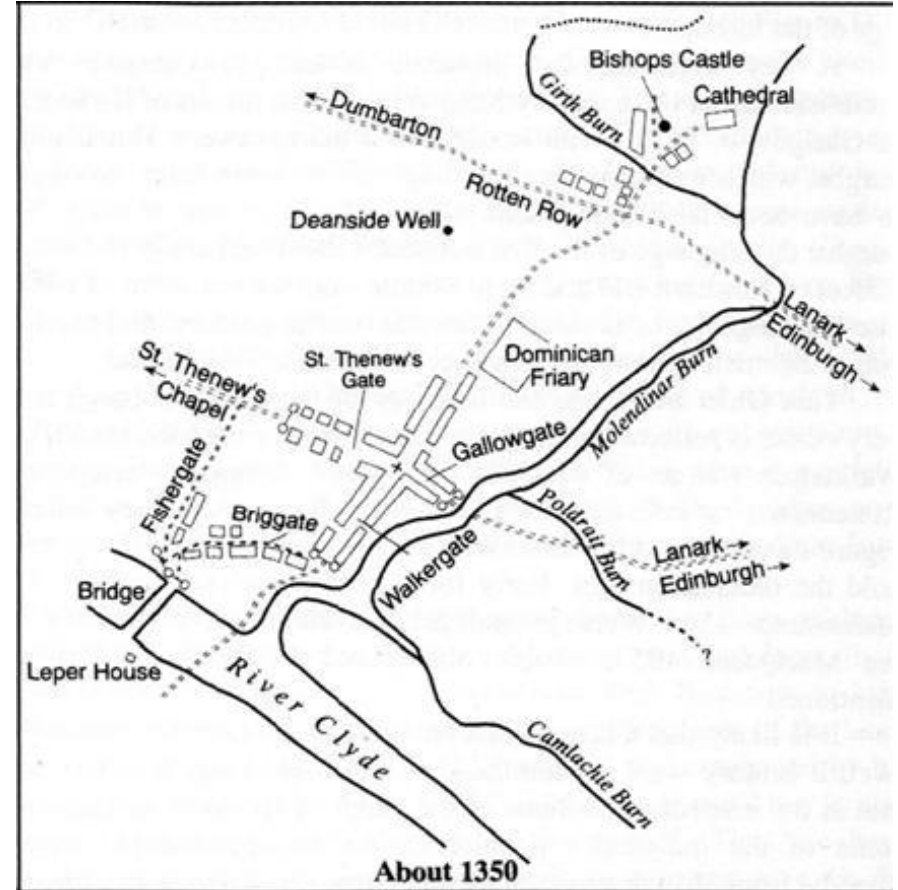
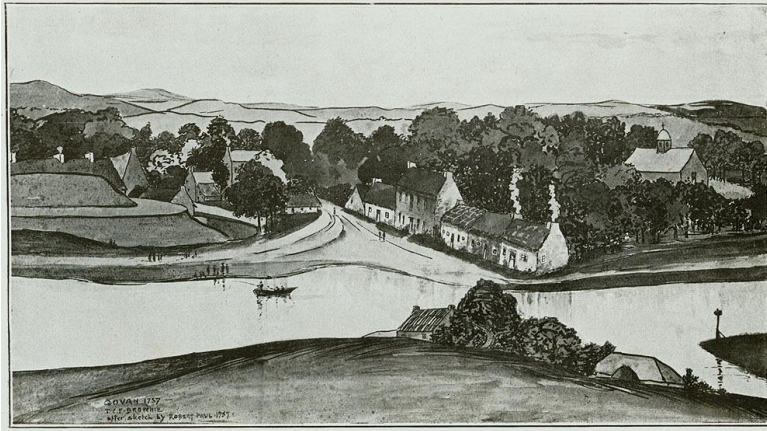
## Strategic Development Framework

## River Clyde SDF

The importance of the river to Glasgow



## A CITY EMERGES



A world class city with a thriving and inclusive economy where everyone can flourish and benefit from the city's success.



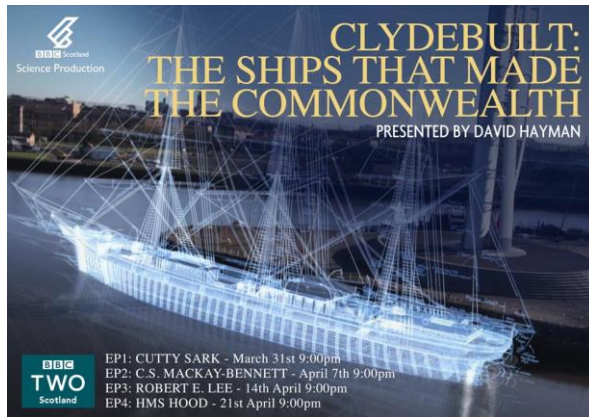
## A TRADING CITY



A world class city with a thriving and inclusive economy where everyone can flourish and benefit from the city's success.



## CLYDEBUILT



A world class city with a thriving and inclusive economy where everyone can flourish and benefit from the city's success.



## LIVING AND WORKING



A world class city with a thriving and inclusive economy where everyone can flourish and benefit from the city's success.



## 'DOON THE WATER'

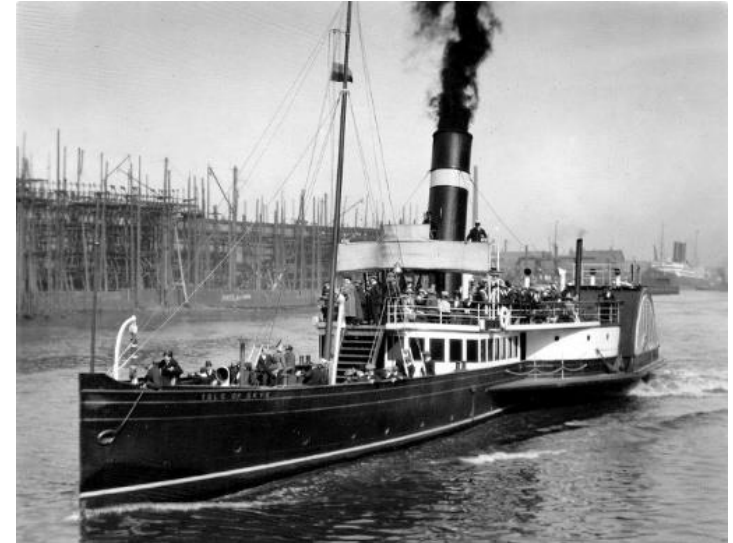
**THE POPULAR EXCURSION ROUTE**  
**GLASGOW AND LAND O'BURNS.**

CALLS AT GREENOCK KIRN DUNOON LARGS MILLPORT ARDROSSAN AND TROON.

CARRIAGES FOR MONUMENT ON ARRIVAL RETURNING IN TIME FOR SAILING

THE NEW SALOON STEAMER.  
**"BONNIE DOON"**

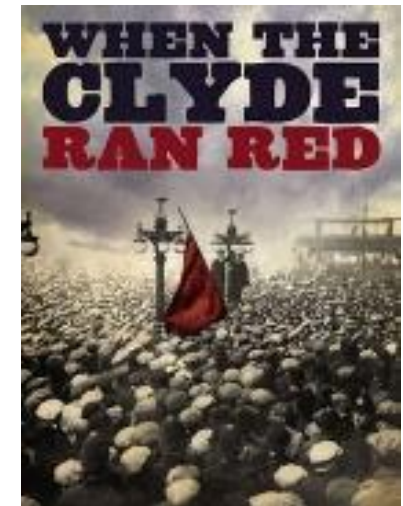
SAILS DAILY FROM GLASGOW AT 7.A.M., RETURNING FROM AYR AT 2.30.P.M.



A world class city with a thriving and inclusive economy where everyone can flourish and benefit from the city's success.



## TURBULENT TIMES



A world class city with a thriving and inclusive economy where everyone can flourish and benefit from the city's success.



## REINVENTION



A world class city with a thriving and inclusive economy where everyone can flourish and benefit from the city's success.

## River Clyde SDF

WHY PREPARE A STRATEGIC DEVELOPMENT  
FRAMEWORK?



## POLICY CONTEXT

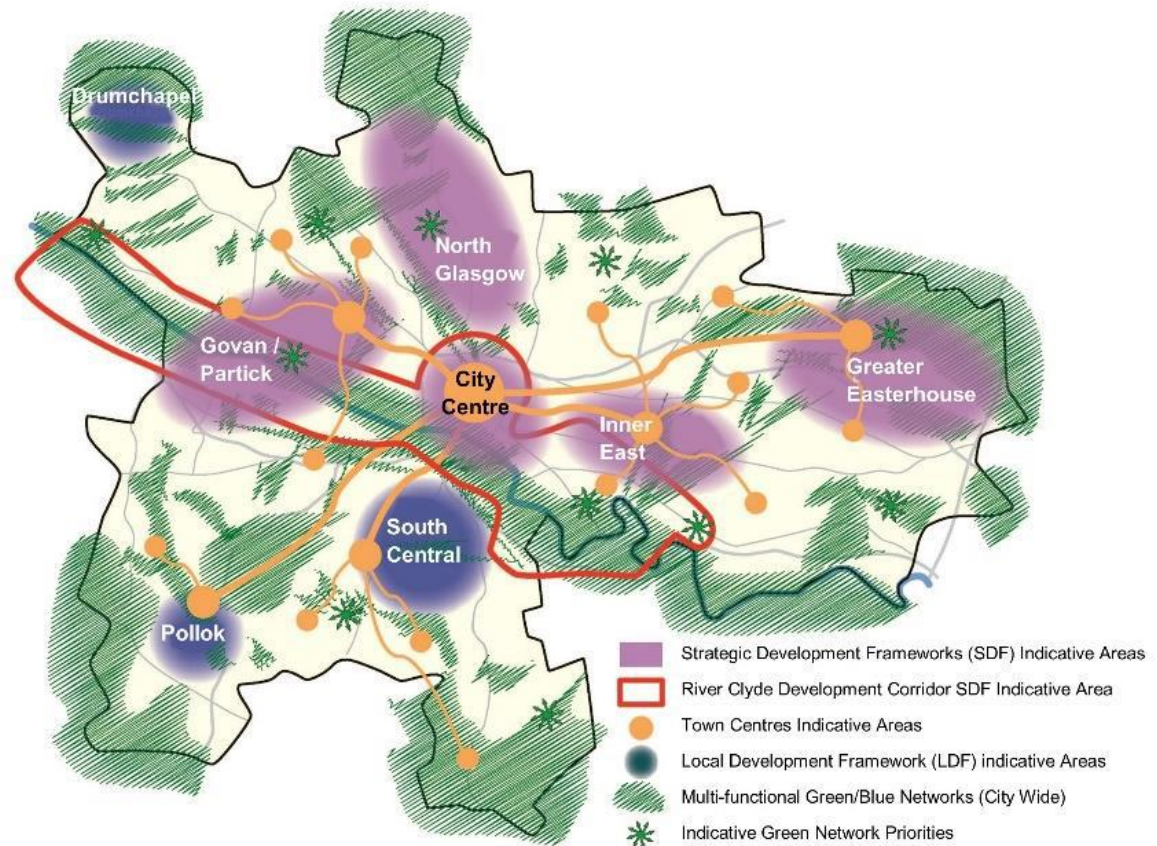


A world class city with a thriving and inclusive economy where everyone can flourish and benefit from the city's success.

## GLASGOW CITY DEVELOPMENT PLAN

### SG2: Sustainable Spatial Strategy

- 6 Strategic Development Frameworks
- 3 Local Development Frameworks



A world class city with a thriving and inclusive economy where everyone can flourish and benefit from the city's success.



## SCALE OF POLICY

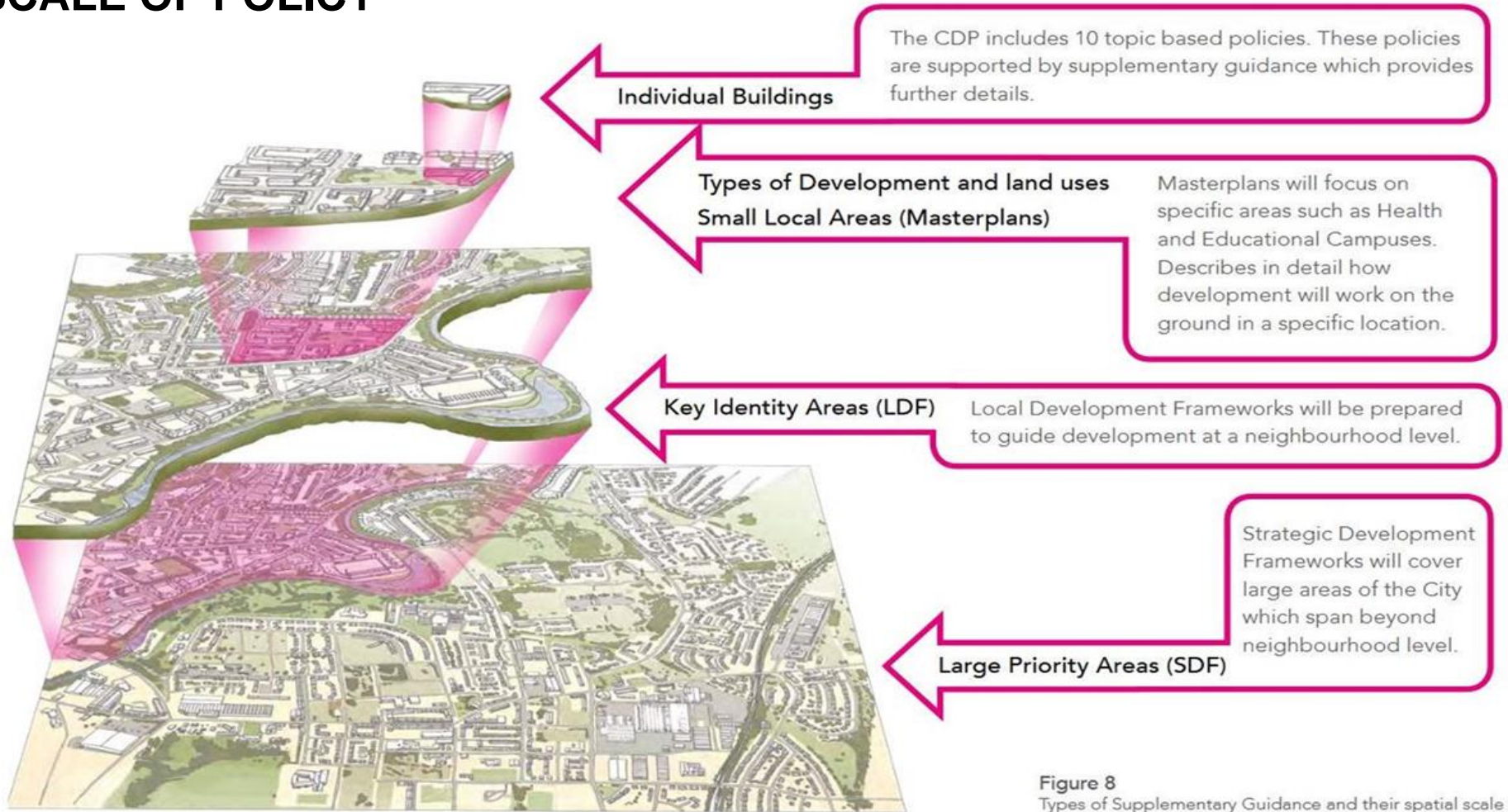


Figure 8  
Types of Supplementary Guidance and their spatial scale

A world class city with a thriving and inclusive economy where everyone can flourish and benefit from the city's success.

## River Clyde SDF

### CHALLENGES



## FLOODING

The river within Glasgow is largely tidal, and although there have been no recorded coastal flooding events within the River Corridor, existing data shows that a 1:200 year flood event would result in the river over-topping quay walls at a number of locations.



## VACANT AND DERELICT LAND



A world class city with a thriving and inclusive economy where everyone can flourish and benefit from the city's success.



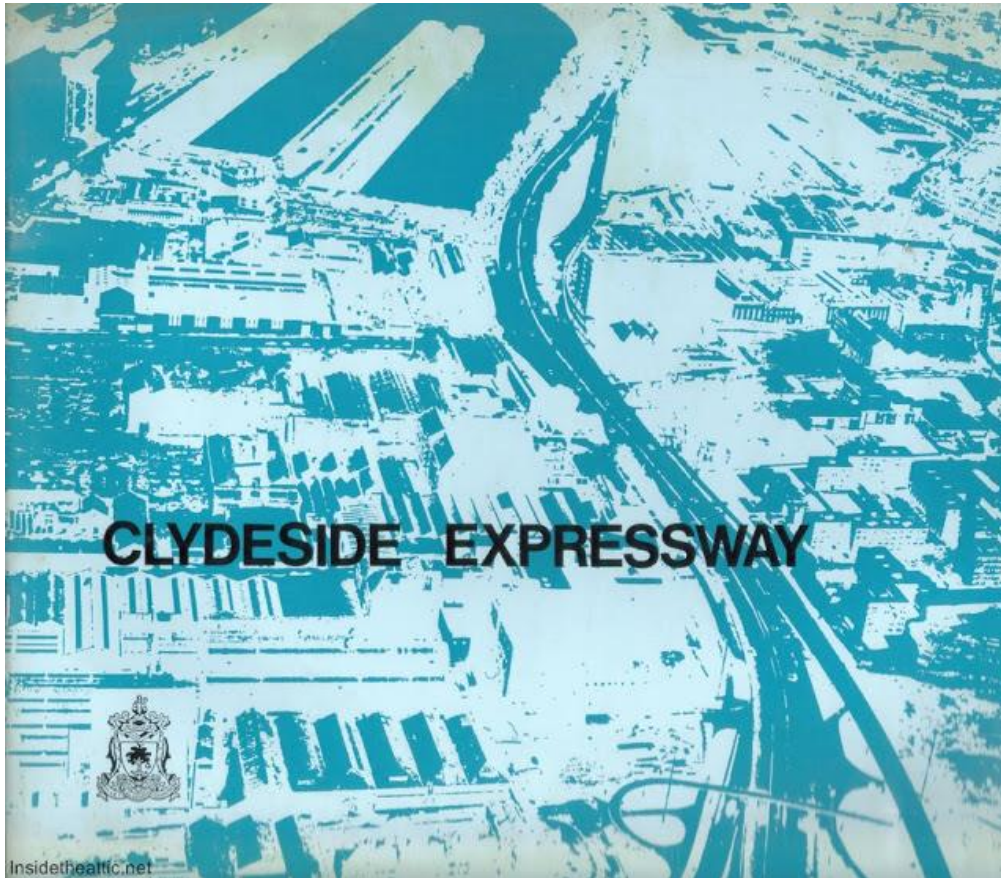
## QUAY WALLS



A world class city with a thriving and inclusive economy where everyone can flourish and benefit from the city's success.



## POOR CONNECTIVITY



A world class city with a thriving and inclusive economy where everyone can flourish and benefit from the city's success.



# River Clyde SDF

## PREPARATION AND ENGAGEMENT

## ENGAGEMENT

- Govan Partick Charrette 2015
- River Area Character Appraisal
- External consultation between December 2018 and February 2019
- Over 200 comments received from a range of stakeholders
- The comments and recommendations helped shaped final SDF
- Three overarching priorities were identified





## PRIORITIES

Recognising the River Corridor as a **major regeneration project** of regional and national significance.

**Unlocking sustainable development** along the River Corridor by addressing immediate challenges, and developing a long-term, **responsive approach to manage** the predicted increase in **flooding** in future years.

Promoting a **design-led, placemaking** approach to enhance and protect the townscape, heritage and environment of the River Corridor while **delivering a well-connected and liveable city**.

## River Clyde SDF

### VISION AND OUTCOMES



## VISION

The River Corridor will be a **world-class destination**, with an **accessible waterfront** and **attractive spaces** where people want to spend time. It will be **climate-resilient** and support a **mix of uses**. New houses and flats will be linked to existing neighbourhoods. The **historic character** will be protected and enhanced, while **innovative design** will help create a distinct identity. It will form part of a wider network of urban waterways, will support **continuous walking and cycling routes**, and be celebrated as the city's **largest, continuous open space**.



A world class city with a thriving and inclusive economy where everyone can flourish and benefit from the city's success.

## OUTCOMES

### A VIBRANT RIVER

The River Corridor will be a **vibrant, attractive destination** which supports **inclusive economic growth**.

### A SUSTAINABLE RIVER

The River Corridor will **balance environmental, social and economic pressures** to create **liveable, inclusive and distinctive places**.

### A CONNECTED RIVER

The River Corridor will be **well-connected and link people, places and natural habitats**.

### A GREEN RIVER

The River Corridor will high quality **green, blue and grey infrastructure** that helps deliver climate change adaptation and **promotes health and wellbeing**.



# River Clyde SDF

## BALANCING COMPETING AMBITIONS

## A VIBRANT RIVER

- Realise potential and unlock development
- Promote a new approach to growing the place
- Activate the water



A world class city with a thriving and inclusive economy where everyone can flourish and benefit from the city's success.



## A SUSTAINABLE RIVER

- Support a higher density and a mix of uses
- Promote climate-responsive design
- Create a distinctive townscape, and protect and enhance historic character



## A CONNECTED RIVER

- Create seamless walking and cycling routes
- Cluster activities and link people to jobs, town centres, services and public transport
- Bring people to the river





## A GREEN AND RESILIENT RIVER

- Advocate climate readiness
- Create a network of open spaces
- Promote nature-based solutions



A world class city with a thriving and inclusive economy where everyone can flourish and benefit from the city's success.

## River Clyde SDF

Where we are now



## SDF ADOPTED 2022

### Delivery Mechanisms:

- Policy/Guidance
- River Park
- Infrastructure
- Studies/Masterplans
- Governance
- Attractors



## Tidal River Clyde Flood Model

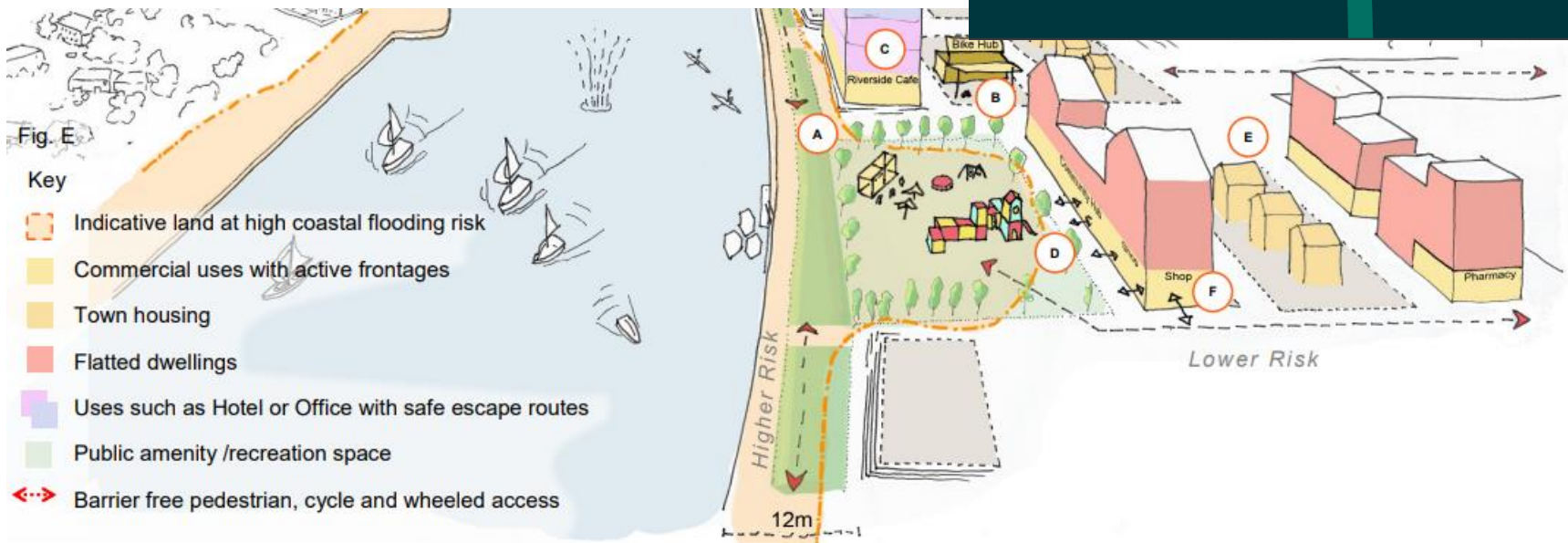
Predicted flood levels from the tidal model for cross-sections along the tidal reach to inform review of development sites. Landowners or developers seeking to assess flood risk for land along the tidal reach should:

- Download the predicted flood levels table and plans, and assess against existing and proposed ground levels for their site/development.
- If, after this initial screening, the site is deemed to be within the functional flood plain, further, more detailed, analysis of flood risk for the site shall be undertaken using the Tidal River Clyde Flood Model.
- The model is currently managed by [Fairhurst](#) on behalf of Glasgow City Council.



## DESIGN GUIDANCE

- Process
- Core Principles and Guidance
- Tidal Clyde Development Flowchart



A world class city with a thriving and inclusive economy where everyone can flourish and benefit from the city's success.

## RIVER ACTIVATION PROGRAMME

- Stimulating interest and engagement with the River
- Bringing activity to the river and animating the waterfront through temporary use
- Encouraging greater use of the River Corridor at different times of the day
- Engaging with local communities in the River Corridor and wider Glasgow City
- Improving access by local communities
- Supporting a healthy environment along the River through an enhanced natural environment





## CITY DEAL INVESTMENT

- Access and integrity of the waterfront
- Developing economic role of the SEC/ Pacific Quay
- Links to University
- Govan - Partick Bridge



A world class city with a thriving and inclusive economy where everyone can flourish and benefit from the city's success.

## RIVER PARK

- Development proposals to support the delivery of a continuous linear park
- Spaces should be multifunctional, safe and inclusive
- Design choices should prioritise climate resilience and support

